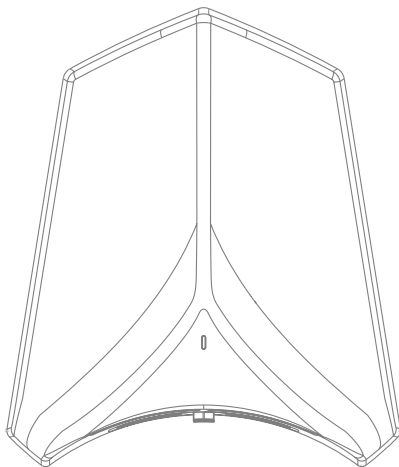




INSTRUCTION MANUAL

Vayda Elite Hand Dryer



Covers
VE1100W
VE1100B
VE1100G

Introduction

Models covered by this instruction sheet:-

Part No. VE1100W, VE1100B & VE1100G Vayda Elite Hand Dryers.



IMPORTANT Read these instructions fully before using the appliance.
Retain these instructions for future reference.

NOTE The appliance may only be used in a fixed position and only for the purpose described. It is not for outdoor use!

SAFETY INSTRUCTIONS

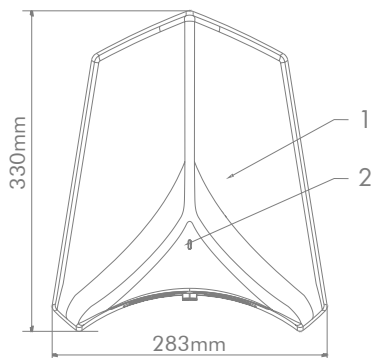
Please read these instructions before operating the appliance.

Failure to follow safety instruction may lead to damage to goods, serious injury or death.

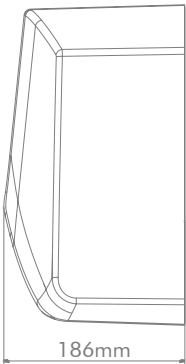
- This product is a wall mounting appliance, never use it as portable appliance.
- This appliance is designed for wall mounting and must be used with the warm air vent facing downwards. This appliance should not be used in any other orientation and should not be used as a free standing portable appliance.
- This appliance is suitable for installation on surfaces with normal flammability e.g. wood, plasterboard, masonry. It is not suitable for use on highly flammable surfaces (e.g. polystyrene, textiles).
- Before making fixing hole(s), check that there are no obstruction hidden beneath the mounting surface such as pipes or cables.
- The chosen location of your new appliance should allow for the product to be securely mounted (e.g. to a firm wall) and safely connected to mains supply.
- Do not position the appliance immediately above a wall socket.
- Do not modify this product. Modification may lead to fire or electric shock.
- Do not use the appliance in areas where flammable liquids are stored or where flammable fumes may be present.
- Electrical installation must be carried out by a qualified professional in accordance with the latest edition of the IEE wiring regulations.
- If the supply cord is damaged, it must be replaced by a qualified professional in order to avoid a hazard.
- Return to a qualified electrical professional for examination, electrical or mechanical adjustment, service or repair.

Drawing

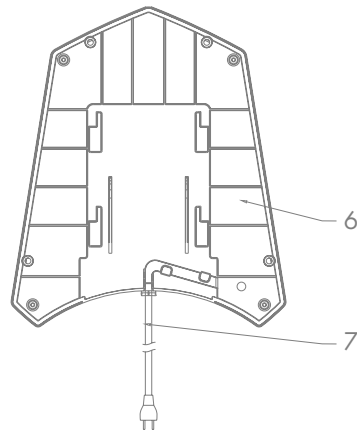
Front



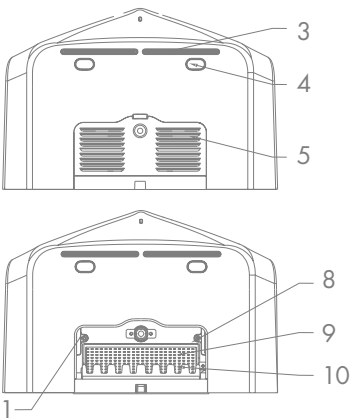
Side



Rear



Bottom



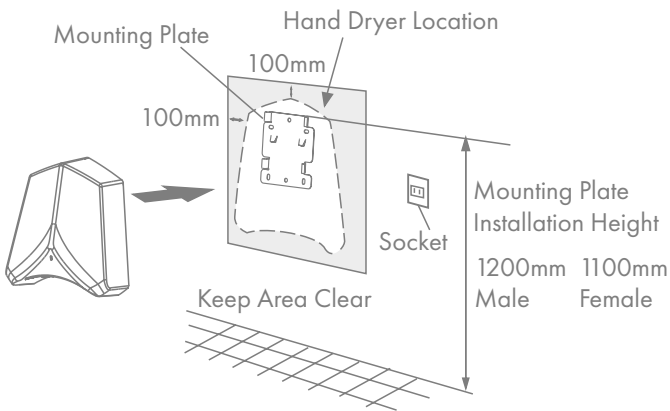
No.	Description	No.	Description	No.	Description
1	Integral cover	5	Front cover of air inlet hood	9	Filter screen
2	Indicator lamp cover	6	Bottom base	10	Filter base
3	Fixed seat of air outlet seat	7	Power Cord	11	Power switch
4	Induction lamp shade	8	Heating switch		

Installation

Choose the location for your new appliance giving consideration to safety instructions. The unit should be installed on a straight, vertical wall, ensuring there is at least 100mm clear space around the top and sides.

Suggested Mounting Height from the floor to the top of the mounting plate

Male	Female/Mixed Use
1200mm	1100mm



Ensure the unit is not installed where it is likely to be damaged by people passing or opening doors.

Avoid installing in areas where the unit could be splashed with water or other liquids.

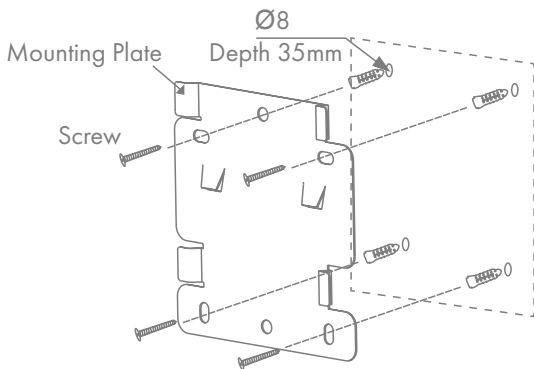
Do not cover vent with hand when in use.

Isolate unit from power supply if not in use for long periods.

Fix Mounting Plate

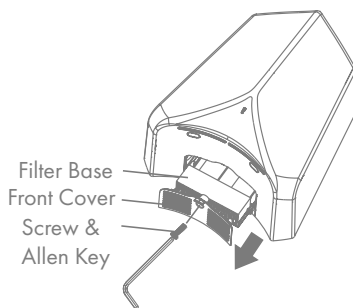
Use included screws.

Mounting plate includes 6 holes, only 4 are required for mounting.

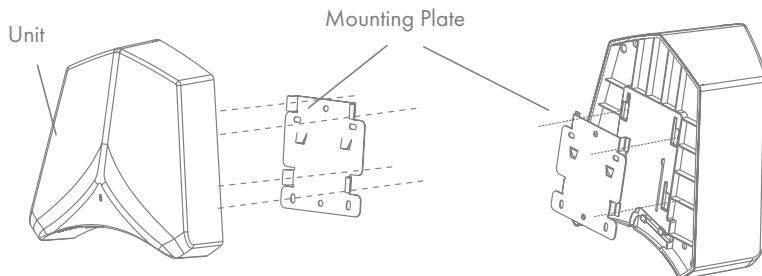


Body Installation

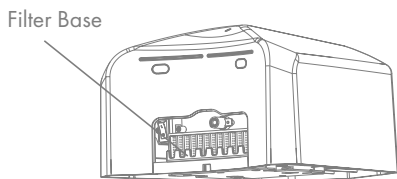
1. Remove the inner hexagon screw from the front cover of the air inlet hood, remove the front cover of the air inlet hood and the filter base.



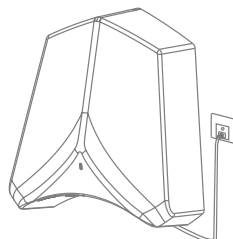
2. Hang unit onto mounting plate.



3. Reinstall the filter base.



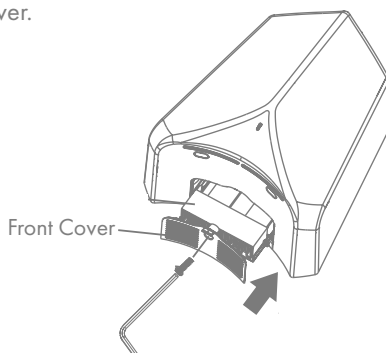
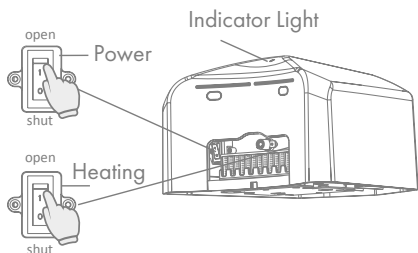
4. Connect to power supply - 220v 15A



Setting of power/Heater Switches

Turn the power switch on and the indicator light will turn red.

Turn the heating switch on then replace front cover.

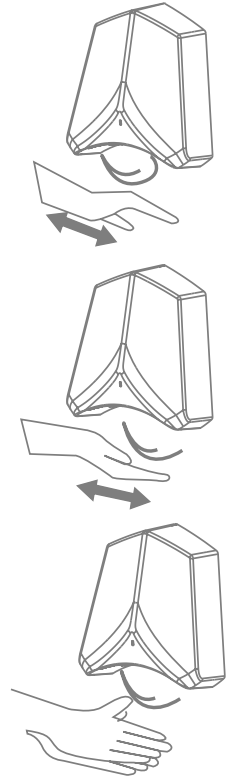


Operation Of The Appliance

- Place hands under the air vent at bottom of unit. Unit will automatically start.
- The indicator light is green when the product is working;
- The unit will dispense warm air for approx. 1 minute before cut out. Remove and replace hands under unit to restart.
- The unit will automatically stop 3 seconds after hands have been removed.

Please Note:

- Even when not in use, the power switch to the open state, about 0.8W of power consumption.
- If sensors detect the presence of a foreign body, in or around the unit, it will not start. Remove before next use.
- Stains on the sensor surface may result in malfunction, ensure all sensor are kept clean.
- When used in cold conditions, unit may initially vent cool air

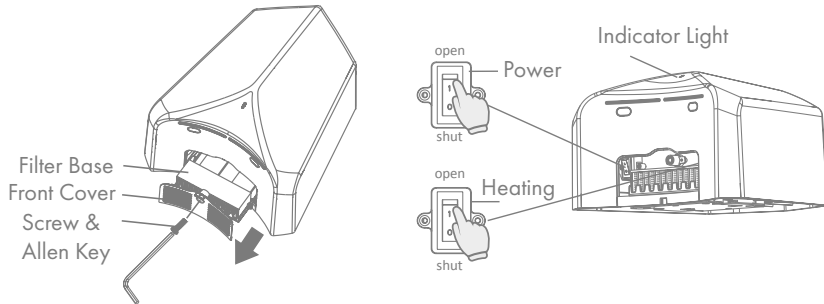


Cleaning The Appliance

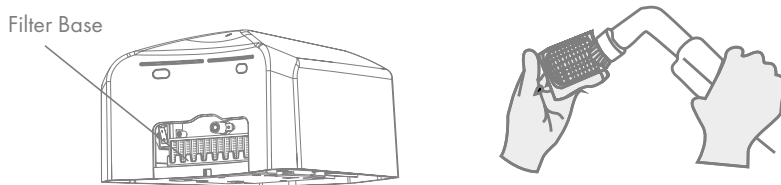
1. Always isolate the appliance from the power supply and allow it to cool down before cleaning.
2. Clean the outside of the appliance by wiping with a damp cloth and buff with a dry cloth. Do not use any detergents or abrasives and do not allow any water to enter the appliance.

Cleaning The Filter (Recommended Monthly)

1. Always isolate the appliance from the power supply and allow it to cool down before cleaning.
2. Open the front cover of the air inlet hood and switch the power switch and heating switch to off.



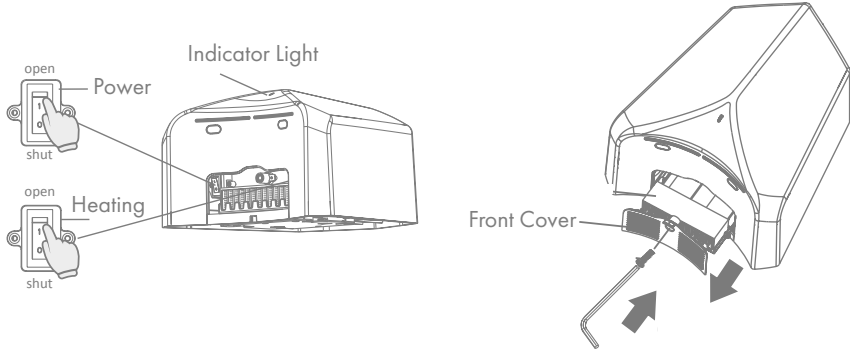
3. Remove the filter base, take out the filter, and use a vacuum cleaner to absorb the dust on the filter.



4. Install the filter and filter base back into the unit.

Cleaning The Filter (Recommended Monthly)

5. Plug the power plug back into the power socket.
6. Switch the power switch and heating switch to on.
7. Install the front cover of the air inlet hood back to the unit body.



Antibacterial & Antifungal Functions

- The filter screen of hand dryer has antibacterial function, and its antibacterial rate against Staphylococcus aureus and Escherichia coli is more than 99.9%.
(test basis: GB21551.2-2010 appendix a film method)
- The body and filter screen of hand dryer have anti mold function, and its anti mold grade reaches grade 0.
(test basis: grade C0 in Appendix of GB21551.2-2010 is the highest level of test basis)
- With the increase of service time, the above antibacterial and antifungal properties will be weakened correspondingly.

Identification & Treatment of Common Faults

Please check the failure as shown in the table below. If the problem is still unresolved, contact our customer service team who will assist you. The products serial number and proof of purchase must be provided.

Fault	Cause	Remedy
Unit does not dispense air	Power supply is off	Turn on power supply
Unit does not start hands are placed under vent or does not stop when removed	The sensor is stained	Clean the sensor
	foreign object in the sensing range of the sensor	Remove the foreign object
	Distance between the hand & the sensor is too far	Move hands closer to the sensor
No warm air	Heat switch is set to off	Turn on heat switch

Product Specification

Rated Voltage (V)	Rated Frequency (Hz)	Rated Power (W)	Rated Current (A)	Power (W)		Current (A)	
				Heating On	Heating Off	Heating On	Heating Off
220	50	1100	5	1100	550	5	2.5

Storing The Appliance

When the appliance is not used for long periods of time it should be protected from dust and stored in a clean dry place.

Warranty

1. This product is guaranteed for a period of 12 months from the date of purchase against faulty components and manufacturing defects.
2. This warranty does not cover wear and tear, or misuse and abuse. Transportation, freight cost and labour costs are excluded.
3. Before taking any action in the event of a fault, contact our customer service team who will assist you. The products serial number and proof of purchase must be provided.

In the event of a faulty product, deXpro will replace faulty parts or at its sole discretion replace the product.

INFORMATION FOR CORRECT DISPOSAL OF THE PRODUCT IN
ACCORDANCE WITH THE EUROPEAN DIRECTIVE 2002/96/E.



At the end of its working life this equipment must not be disposed of as household waste. It must be taken to a local authority waste collection centre or to a dealer providing this service. Disposing of electrical and electronic equipment separately enables its components to be recovered and recycled to obtain significant savings in energy and resources. In order to underline the duty to dispose of this equipment separately, the product is marked with a crossed out dustbin.

