



Beautifully finished, our Inspire range of heaters are the highest quality on the market and are available in a number of finishes ranging from white panels to picture and glass panels. Manufactured to the highest standards in Germany, they are designed and built to last a lifetime and come complete with a 10 year warranty.

Inspire Glass Far Infrared heaters are made from high-quality reinforced safety glass, (ESG) combining sophisticated designs with optimum safety and energy efficiency, a system never out of style. This sleek, beautiful design will enhance your home or office with class and elegance but also guarantee an improved level of comfort. Enjoy the benefits of Far Infrared healthy heating in your home or office. The Inspire Glass heaters come in 4 different sizes and are available in white and black. A selection of optional frames is available (with surcharge).

The Inspire panels are specifically designed to be maintenance free and to last for many years. The Inspire Glass panels do not have any in-built controls and must be used in conjunction with Herschel iQ controls or equivalent. This will ensure full compliance with European energy saving regulation (ERP Lot 20).

Available Models

Model Number	Dimensions	Weight	Power	Heated Area*
GH-300-B	30 x 90 cm	8 kg	350 W	4 - 7 m ²
GH-300-W	30 x 90 cm	8 kg	350 W	4 - 7 m ²
GH-500-B	60 x 80 cm	12 kg	550 W	7 - 12 m ²
GH-500-W	60 x 80 cm	12 kg	550 W	7 - 12 m ²
GH-750-B	70 x 90 cm	16 kg	750 W	11 - 18 m ²
GH-750-W	70 x 90 cm	16 kg	750 W	11 - 18 m ²
GH-900-B	80 x 100 cm	20 kg	900 W	13 - 22 m ²
GH-900-W	80 x 100 cm	20 kg	900 W	13 - 22 m ²

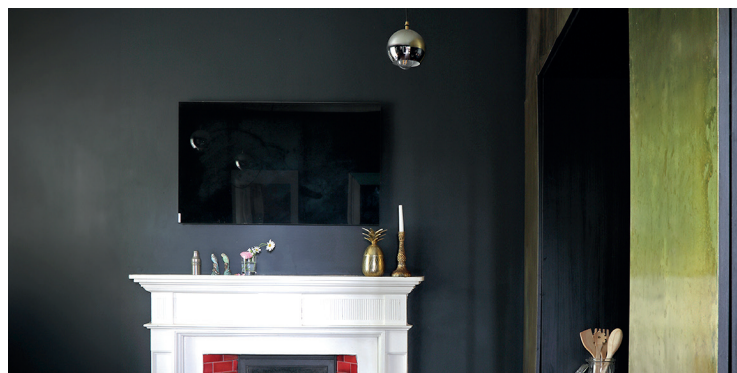
* The heated areas are an indicative guide only. The actual heated area will depend on the heat loss of the room which is influenced by many factors including construction type, external walls, window area and insulation levels. Always use the Herschel online calculator or contact your dealer or installer for an accurate specification.

Technical Details

Surface	ESG Safety Glass
Colour	White or Black
Rear Panel	Sheet steel, powder coated, mounting points
Surface Temperature	95 - 105°C
Voltage	230V 50Hz
Protection Class	IP54
Cable	1.8m
Installation	Wall-mounted only

Certificates       

Warranty 10 years



Important

The Inspire panel comes with two mounting brackets. When installed, the front of the panel will extend a total of 5cm from the wall. The panel will radiate heat into the room and will perform best when mounted in a position free of any direct obstructions such as a sofa. The panel will need to be wired into the mains and this should be carried out by a suitably qualified electrician. Always refer to installation instructions prior to installation for full details.